

0522 SERIES



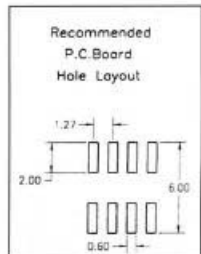
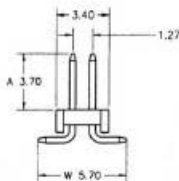
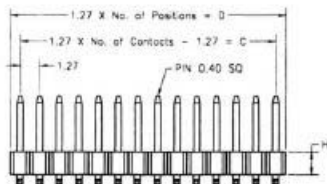
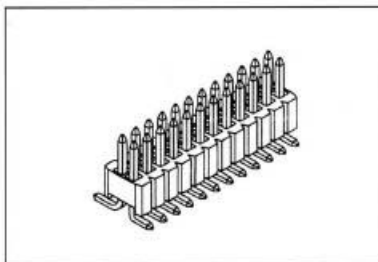
1.27x1.27mm(0.05"x0.05"), 0.4mm Square Pin, Pin Header, Dual Row, S.M.T Type

Specifications

Current Rating: 1Ampere
 Insulation Resistance: 500M Ω Min.
 Dielectric Withstanding: 300V AC
 Contact Resistance: 20m Ω Max.
 Operating Temperature: -40°C to +105°C

Materials

Contact Material: Phosphor Bronze
 Contact Plating: Gold/Tin over Nickel
 Insulator: Glass Filled Polyester (UL 94V-0)



No. of Pins/Row	Dimension Information		No. of Pins/Row	Dimension Information		No. of Pins/Row	Dimension Information		No. of Pins/Row	Dimension Information	
	C	D		C	D		C	D		C	D
03	2.54	3.81	10	11.43	12.70	17	20.32	21.59	24	29.21	30.48
04	3.81	5.08	11	12.70	13.97	18	21.59	22.86	25	30.48	31.75
05	5.08	6.35	12	13.97	15.24	19	22.86	24.13	26	31.75	33.02
06	6.35	7.62	13	15.24	16.51	20	24.13	25.40	27	33.02	34.29
07	7.62	8.89	14	16.51	17.78	21	25.40	26.67	28	34.29	35.56
08	8.89	10.16	15	17.78	19.05	22	26.67	27.94	29	35.56	36.83
09	10.16	11.43	16	19.05	20.32	23	27.94	29.21	30	36.83	38.10

Ordering Information

0522 - X X X - X X 0

1: Tin 00: H=1.0mm Position

2: Gold 01: H=1.5mm

3: Half Gold 02: H=1.7mm

 03: H=2.0mm

0522 SERIES



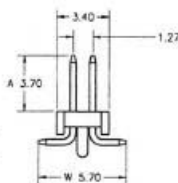
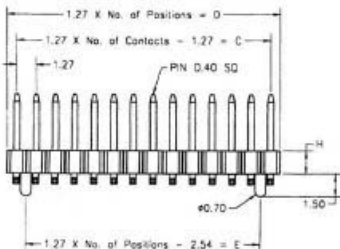
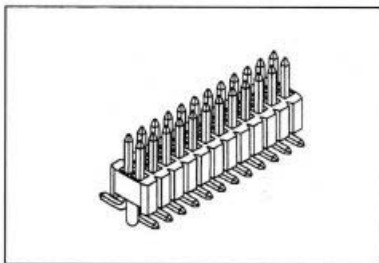
1.27x1.27mm(0.05"x0.05"), 0.4mm Square Pin, Pin Header Dual Row, S.M.T Type, With Local Peg

Specifications

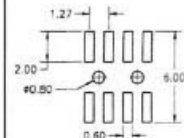
Current Rating: 1Ampere
 Insulation Resistance: 500M Ω Min.
 Dielectric Withstanding: 300V AC
 Contact Resistance: 20m Ω Max.
 Operating Temperature: -40°C to +105°C

Materials

Contact Material: Phosphor Bronze
 Contact Plating: Gold/Tin over Nickel
 Insulator: Glass Filled Polyester (UL 94V-0)



Recommended
P.C.Board
Hole Layout



No. of Pins/Row	Dimension Information			No. of Pins/Row	Dimension Information			No. of Pins/Row	Dimension Information			No. of Pins/Row	Dimension information		
	C	D	E		C	D	E		C	D	E		C	D	E
03	2.54	3.81	1.27	10	11.43	12.70	10.16	17	20.32	21.59	19.05	24	29.21	30.48	27.94
04	3.81	5.08	2.54	11	12.70	13.97	11.43	18	21.59	22.86	20.32	25	30.48	31.75	29.21
05	5.08	6.35	3.81	12	13.97	15.24	12.70	19	22.86	24.13	21.59	26	31.75	33.02	30.48
06	6.35	7.62	5.08	13	15.24	16.51	13.97	20	24.13	25.40	22.86	27	33.02	34.29	31.75
07	7.62	8.89	6.35	14	16.51	17.78	15.24	21	25.40	26.67	24.13	28	34.29	35.56	33.02
08	8.89	10.16	7.62	15	17.78	19.05	16.51	22	26.67	27.94	25.40	29	35.56	36.83	34.29
09	10.16	11.43	8.89	16	19.05	20.32	17.78	23	27.94	29.21	26.67	30	36.83	38.10	35.56

Ordering Information

0522 - X X X - X X 0

1: Tin 08: H=1.0mm

2: Gold 09: H=1.5mm

3: Half Gold 10: H=1.7mm

11: H=2.0mm

Position